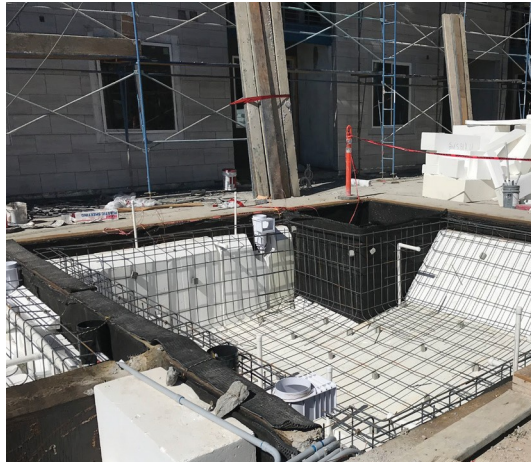


GET A GRIP ON YOUR NEXT CONSTRUCTION JOB

TREMGrip™

TREMGrip's quick tack adhesive is a second set of hands you can count on for a variety of applications on a number of substrates, limiting extrasteps and allowing rapid installation.

- SINGLE COMPONENT ELASTOMERIC ADHESIVE (MEDIUM MODULUS)
- HIGH INITIAL GRAB (GREEN STRENGTH)
- INSTANT GRAB MINIMIZES THE NEED FOR ADDITIONAL FASTENERS OR CLAMPS
- OFFERS GREAT ELASTICITY AND RAPID BOND DEVELOPMENT
- ENVIRONMENTALLY FRIENDLY, SOLVENT FREE FORMULATION, LOW ODOR AND EXTREMELY LOW VOC
- RESISTANT TO UV, WEATHER AND AGING
- INDOOR/OUTDOOR USE ON A VARIETY OF SUBSTRATES



DESCRIPTION

TREMgrip is a one component, non-sag, elastic adhesive based on hybrid polymers

USAGE/PURPOSE

TREMgrip has been developed to bond materials to a variety of substrates where an adhesive with extremely high initial green strength is required. Examples of applications include, but are not limited to:

- Drainage board for backfill applications
- Air Barrier Applications
- Insulation to Air Barriers and Below Grade Membranes

COLOR

Grey

PACKAGING

300 ml cartridge (12 per carton) with removable nozzle.
600 ml sausage (15 per carton).

TECHNICAL INFORMATION

Property	Test Method	Results
Tensile	ASTM D412	390 psi
Elongation	ASTM D412	420%
Tear Strength	ASTM D624	76 psi
Hardness - Shore A	ASTM C661	60
Skin Time	ASTM C679 (8.4)	10-14 minutes
Tack Free Time	ASTM C679	16-18 minutes
Movement Capabilities	ASTM C719	In Progress (35%)
Lap Shear	ASTM C961	280 psi

NECESSARY TOOLS

TREMgrip is easy to apply with conventional caulking equipment

PLEASE NOTE

Not Suitable for bonding polyethylene, polypropylene, Teflon® or nylon. Not recommended for sheet laminate. Do not use as a structural glazing adhesive. Not suitable for bonding of plastics that are sensitive to stress cracking. Not recommended for prolonged exposure to water. Contact with bituminous or tar containing surfaces may lead to discoloration. Staining on natural stone may occur. If 2 non-porous substrates are adhered, the maximum width should not exceed 15 mm.

HEALTH & SAFETY PRECAUTIONS

Safety data sheet must be read and understood before use.

COVERAGE

Width x Depth (in)	Linear feet per 300 ml Cartridge
1/4 x 1/4	25
5/16 x 1/4	20
3/8 x 5/16	13
1/2 x 3/8	8
3/4 x 1/2	4
1 x 1/2	3
1 1/4 x 1/2	2.5

Width x Depth (mm)	Linear meters per 300 ml Cartridge
5x5	12.4
8x6	6.4
10.8	3.8
15x10	2
20x12	1.2
25x15	0.8
30x15	0.6